

**FIRE INFORMATION**  
**Black Hills National Forest**  
**South Dakota**

**Incident Name:** Flynn Creek Fire

**Date:** Today

**Time:** 4:00 a.m. (0400)

**Size of Fire:** as much as 650 acres

**Location:** part of Sec. 2, T4S, R5E

**Descriptive Location:** The fire started 8 miles south of Custer in vicinity of Cicero Peak and Flynn Creek Road. It has spread to the northeast and has crossed into Custer State Park in the vicinity of Bluebell. The fire is approximately 3 miles from Custer and no present threat to the city.

**Situation:** A Type 3 Team has been ordered. At 10:34 am yesterday, the South Dakota state fire lookout on Battle Mountain reported the fire. It has been determined the fire was caused by logging equipment operating in the area. Yesterday, the fire burned aggressively in heavy fuels and dense timber for several hours and spotted as much as a half mile ahead of the main fire.

Fire movement is to the northeast, toward the Hazelrodt Springs and Bluebell area near French Creek. The fire is 2 to 3 miles long. As of 0400 today, the fire was reported burning very hot, with spotting up to  $\frac{3}{4}$  mile ahead. There is no estimated time of control.

There are structures in the general vicinity of the fire, including homes in the Hazelrodt Springs and Bluebell areas. None are known to have been damaged or destroyed. Structural engines are being used to protect structures.

Two airtankers from Grand Junction, Colorado dropped 6 loads of fire retardant on the fire through the afternoon.

There were about 145 people on the fire overnight from the Forest Service, National Park Service, Custer State Park, South Dakota Division of Forestry, Custer County and local fire departments, including Custer and Hot Springs.

**Outlook:** High temperatures forecast for today are 74-77, RH 15-25, winds 15-20 mph from the north with higher gusts when the front passes.

**Logistics:** Initial attack dispatch has turned all resource orders over to expanded dispatch.

The **local cache is no longer supporting the incident**, and all the cache orders must be placed with the Geographic Area Cache. There is a Fire Business person named Yvonne at the Supervisor's Office who has established local purchasing and contracting support. There is no buying team in place yet.

There is a ramp manager with support staff at the Custer (CUT) airport and a ramp manager at the jetport in Rapid City (RAP). All transportation is being arranged by the ramp managers.

### **Incident Directions:**

From: Rapid City, SD to Custer, SD:

Go South on Hwy 16, turn left on Hwy 385.

To: Black Hills National Forest Supervisor's Office: Hwy 385 Custer, SD 57730.

To: ICP:

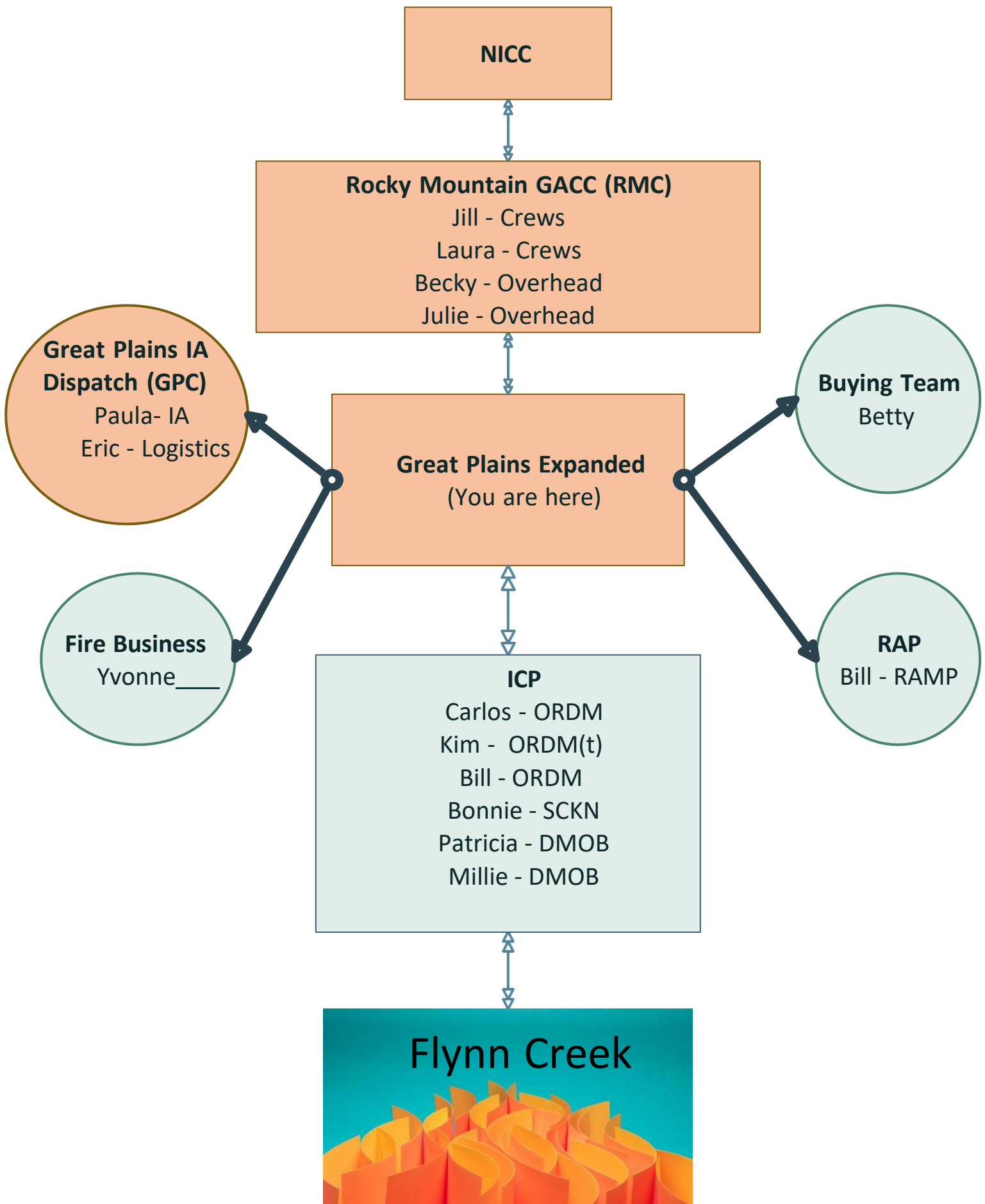
From Custer, SD go south on Forest Road 793 approximately 3.5 miles. Turn left on Forest Road 336. Go ½ mile. Look for the red and white flagging on the left. Follow flagging to ICP.

### **Incident Organization:**

Share the organizational chart with the students. Keep the chart available for the remaining Simulations (2-4) in case there are questions.

# Organizational Chart

## Great Plains - Flynn Creek



## COACHES INPUT REFERENCE AND SCORING SHEET

### SIMULATION 1 – CREWS

INPUT	TIME	INPUT DESCRIPTION	FOLLOW-UP ACTION	SCORE
1	+12	<p>IA dispatch is busy and wants expanded to fill pending T2 crew orders with:</p> <ul style="list-style-type: none"> <li>• WKD Hotliners,</li> <li>• Kyle #1,</li> <li>• Ridge Runners,</li> <li>• Eagle Butte #1,</li> <li>• Eagle Butte # 2.</li> </ul> <p>All with 2 hours for travel.</p> <p>Find out how many orders are open/pending</p>	<ul style="list-style-type: none"> <li>– Fill and set travel ETD/ETA</li> <li>– Notify ICP</li> <li>– All crews have rosters.</li> <li>– Use the Request Status action tile, notify the EDSP</li> </ul>	
2	+24	<p>ICP phones with request for</p> <ul style="list-style-type: none"> <li>• 5 Type 2 IA Crews</li> <li>• 5 Type 1 Crews.</li> </ul>	<ul style="list-style-type: none"> <li>– Create orders in IROC</li> <li>– Fill 3 with local Durango Regulars #1,2,3</li> <li>– Place the rest to RMC</li> <li>– Notify RMC</li> </ul>	
3	+36	<p>CREP for Eagle Butte #2 Crew, calls from Sturgis, SD. Bus is broke – should be fixed in 1 hour.</p>	<ul style="list-style-type: none"> <li>– Inform EDSP</li> <li>– Pass delay to ICP</li> <li>– Document new ETA in IROC</li> </ul>	
4	+48	<p>RMC Crew Desk emails flight plan for NICC jet to RAP for 5 Type 1 crews from the Northwest.</p>	<ul style="list-style-type: none"> <li>– Check fill information</li> <li>– Notify ICP</li> </ul>	
5	+60	<p>RMC Crew Desk phones with emergency message for Walter Simmons on the Pine Ridge #8 Crew.</p>	<ul style="list-style-type: none"> <li>– Document on Emergency Release form</li> <li>– Inform EDSP</li> <li>– Pass to ICP and ask for verbal confirmation of receipt of message. ICP will call back.</li> </ul>	

INPUT	TIME	INPUT DESCRIPTION	FOLLOW-UP ACTION	SCORE
6	+72	RMC Crew Desk phones with 2-hour delay on NICC jet to RAP with 5 Type 1 crews.	<ul style="list-style-type: none"> <li>– Document on requests</li> <li>– Notify ICP and EDSP</li> </ul>	
7  2 of 2	+84	<p>EDSP wants to know how many resources still need travel entered.</p> <p>ICP calls to check status of 2 Type 2 IA crews. (From Student Input 2)</p>	<ul style="list-style-type: none"> <li>– Request Status action tile, "Filled - Needs Travel"</li> <li>– Give number to EDSP, provide RON information</li> <li>– Check Request Status Action Tile for fill information</li> <li>– Notify ICP</li> </ul>	
8	+96	ICP calls, Emergency Message received, incident will provide driver and vehicle to take crew member Walter Simmons, Pine Ridge #8 crew home.	<ul style="list-style-type: none"> <li>– Document on specific crew requests</li> <li>– Document on Emergency Release Form</li> <li>– Notify EDSP</li> <li>– Release Resource</li> </ul>	
9	+108	ICP calls, Pine Ridge #9, Crew Boss is sending two individuals home to return to college. ICP will send them home with Walter Simmons.	<ul style="list-style-type: none"> <li>– Advise EDSP</li> <li>– Release subordinate crew members and document</li> </ul>	
10	+120	ICP calls with request for 2 camp crews.	<ul style="list-style-type: none"> <li>– Create the request,</li> <li>– fill one with Box Elder # 1,</li> <li>– leave one in pending</li> </ul>	

STUDENT NAME: \_\_\_\_\_ TOTAL: \_\_\_\_\_

## COACHES INPUT REFERENCE AND SCORING SHEET SIMULATION 1 – EQUIPMENT

INPUT	TIME	INPUT DESCRIPTION	FOLLOW-UP ACTION	SCORE
1  2 of 2	+12	ICP phones with a request for a lowboy needed at 20:00 tonight.  EDSP wants to know how many orders are pending.	<ul style="list-style-type: none"> <li>- Create request</li> <li>- Check for local resources (none avail)</li> <li>- No VIPR available</li> <li>- Student should contact Fire Business to EERA a lowboy.</li> <li>- Give the coach the number (0)</li> </ul>	
2	+24	ICP phones with request for <ul style="list-style-type: none"> <li>1 pickup with driver</li> <li>1 Type 3 engine.</li> </ul>	<ul style="list-style-type: none"> <li>- Create request</li> <li>- Check available local resources</li> <li>- No VIPR available</li> <li>- Notify Fire Business of pickup order to EERA</li> <li>- Fill Engine with BKF #99.</li> </ul>	
3	+36	Fire Business relays fill information for lowboy and the pickup.	<ul style="list-style-type: none"> <li>- Fill lowboy and pickup with agreement</li> <li>- Notify ICP</li> </ul>	
4	+48	ICP phones with request for 5 Type 3 engines.	<ul style="list-style-type: none"> <li>- Create requests</li> <li>- Fill 1 local WH530240</li> <li>- 2 VIPR- Fires R Us &amp; Happy- (3 VIPR turn down assignment)</li> <li>-- Place Up 2</li> </ul>	
5	+60	EDSP asks for status of vehicles availability to transport Type 1 Crews and their tools from RAP to ICP at 0600 tomorrow.	<ul style="list-style-type: none"> <li>- Check with Ground Support (transportation is available at RAP)</li> <li>- Inform EDSP</li> <li>- If asked by Supply- Ground Support can p/u &amp; deliver RAWS.</li> </ul>	



## COACHES INPUT REFERENCE AND SCORING SHEET

### SIMULATION 1 – OVERHEAD

INPUT	TIME	INPUT DESCRIPTION	FOLLOW-UP ACTION	SCORE
1 <i>(flight plan)</i>	+12	RMC Overhead desk emails flight plan for PIO3, LSC3, DIVS, and SITL on Type 3 team.	<ul style="list-style-type: none"> <li>– Check travel info in IROC (it's there)</li> <li>– Pass to ICP</li> </ul>	
2 of 2		Fill/travel received in IROC for LSC3, SPUL, COML and TIME (commercial to RAP); and for FBAN, FACL.	<ul style="list-style-type: none"> <li>– Notify ICP</li> <li>– Pass commercial travel to ground support</li> </ul>	
2	+24	EDSP wants to know how many orders are open or pending	<ul style="list-style-type: none"> <li>– Go to Pending Request and give EDSP the number</li> </ul>	
3	+36	On the <b>BKF Large Fire Support</b> order, the EDSP requests two EDRCs and one EDSP for expanded dispatch night shift.	<ul style="list-style-type: none"> <li>– Confirm they are on the Support order</li> <li>– Check available local &amp; fill EDSP- Jane Maxwell EDRC's- Emma Long and Cathy White. Will call back with travel, set travel to be arranged in IROC</li> </ul>	
4	+48	ICP phones with request for three DIVS and one HEQB.	<ul style="list-style-type: none"> <li>– Confirm they are on <b>Flynn Creek</b></li> <li>– Get date and time needed from ICP (<b>answer: 1800 today</b>)</li> <li>– Check available local resources fill DIVS- Roger Enwald &amp; Tom Fuchs, HEQB- Fred Masher</li> <li>– Place up one DIVS</li> </ul>	
5	+60	ICP orders an IMET.	<ul style="list-style-type: none"> <li>– Notify with EDSP</li> <li>– Create order; place up</li> <li>– Notify RMC of new request</li> </ul>	



INPUT	TIME	INPUT DESCRIPTION	FOLLOW-UP ACTION	SCORE
6	+72	ICP orders a STEN.	<ul style="list-style-type: none"> <li>– Create STEN, check available local fill with Alan Cardinal.</li> <li>– Confirm engine orders with Equipment Desk and match date and time needed.</li> </ul>	
7 <i>2 of 2</i>	+84	<p>EDSP wants to know how many resources still need travel.</p> <p>EDSP- Jane Maxwell for <b>BKF Large Fire Support</b> calls with travel information.</p>	<ul style="list-style-type: none"> <li>– Check IROC and give number to EDSP</li> <li>– Set travel in IROC</li> <li>– Inform EDSP</li> </ul>	
8 <i>2 of 2</i>	+96	<p>On Flynn Creek, fill information is received for DIVS, HEQB.</p> <p>On <b>BKF Large Fire Support</b>, EDSP orders four EDSDs and one EDSP.</p>	<ul style="list-style-type: none"> <li>– Notify ICP</li> <li>– Confirm they are on the right incident</li> <li>– Create - check available local, fill EDSP- Peggy Moore, 2 EDSDs- James Bond &amp; Lily Tomlinson. Place up 2 EDSD's.</li> </ul>	
9	+108	ICP wants to know the status of the STEN and IMET	<ul style="list-style-type: none"> <li>– Check IROC</li> <li>– Notify ICP</li> </ul>	
10	+120	ICP calls with a name request for Jerry Stickley, INVf for continuity of investigations.	<ul style="list-style-type: none"> <li>– Inform EDSP</li> <li>– Create request using Name Request feature</li> <li>– Place up</li> </ul>	

STUDENT NAME: \_\_\_\_\_ TOTAL: \_\_\_\_\_

## COACHES INPUT REFERENCE AND SCORING SHEET

### SIMULATION 1 – SUPPLY

INPUT	TIME	INPUT DESCRIPTION	FOLLOW-UP ACTION	SCORE
1	+12	ICP phones with request for: <ul style="list-style-type: none"> <li>- 20 ea. cubitainers (needed 0900 tomorrow) (NFES 000048)</li> <li>- 10 ea. 5 gallon cans of unleaded gas (needed at ICP 0600 tomorrow)</li> <li>- 1 RAWS (NFES 005869) (needed at ICP 0600 tomorrow)</li> </ul>	<ul style="list-style-type: none"> <li>– Create orders in IROC</li> <li>– Place NFES Cubi to RMK (cubi order should be 1 BX for a total of 20 cubis)</li> <li>– Gas is local purchase keep order in pending.</li> <li>– Place RAWS to GACC</li> <li>– Notify Fire Business unit of local purchase items (Gas)</li> </ul>	
2	+24	Bill at ICP orders one Cache Van (NFES 002069)	<ul style="list-style-type: none"> <li>– Create order in IROC</li> <li>– Pass up to Cache</li> </ul>	
3	+36	EDSP verbally requests 2 motel rooms for 2 night shift EDRCs, for <b>BKF Large Fire Support</b> .	<ul style="list-style-type: none"> <li>– Confirm they are on the <b>Support</b> order</li> <li>– Create requests with night shift in special needs</li> <li>– Notify Fire Business of local purchase items</li> </ul>	
4	+48	ICP phones with request for 500 breakfasts and 500 sack lunches, needed 0600 tomorrow.	<ul style="list-style-type: none"> <li>– Inform EDSP; ask if caterer is needed (have student create one S# for breakfast and one S# for lunch)</li> <li>– Keep orders in pending for now, will get more info later</li> <li>– Notify Fire Business of local purchase items</li> </ul>	
5	+60	ICP emails supply order on general message form <ul style="list-style-type: none"> <li>– Canteen: NFES 000038</li> <li>– Backpack: NFES 001149</li> <li>– Tank: NFES 000568</li> </ul>	<ul style="list-style-type: none"> <li>– Create orders in IROC</li> <li>– Keep local purchase orders in pending</li> <li>– Place NFES orders to Cache</li> <li>– Notify Fire Business of local purchase items</li> <li>– Pop order should not be created or filled</li> </ul>	

INPUT	TIME	INPUT DESCRIPTION	FOLLOW-UP ACTION	SCORE
6	+72	RMC emails fill on supplies. Shipping report on cubies. Also includes flight plan for charter flight from BOI, with RAWs. (From Input 1).	<ul style="list-style-type: none"> <li>– Pass to ICP</li> <li>– Confirm with Aircraft</li> <li>– Arrange for transport for RAWs (talk to EQ desk/ transportation) RAP has transport</li> </ul>	
7	+84	Fire Business calls with fill on local purchase orders for meals.	<ul style="list-style-type: none"> <li>– Pass to ICP</li> <li>– Fill orders in IROC</li> </ul>	
8	+96	ICP emails supply order for local and cache items -Repeater: NFES 004248 -Crash kit: NFES 001040 -Port. Tank: NFES 000588 -Pump Kit: NFES 003870	<ul style="list-style-type: none"> <li>– Create orders in IROC</li> <li>– Place NFES items.</li> <li>– Keep local purchase items in pending until further info is given</li> <li>– Notify Fire Business of local purchase items</li> </ul>	
9	+108	ICP calls with order for -500 sack lunches -1 public address system - NFES 004181 Needed at ICP by 0700 on Wednesday	<ul style="list-style-type: none"> <li>– Create orders in IROC</li> <li>– Place NFES items to RMK</li> <li>– Lunches will stay in pending until further info is given</li> <li>– Notify Fire Business of local purchase items (Sack lunches)</li> </ul>	
10	+120	Fire Business calls with fill on local purchase order, fuel from Input 1.	<ul style="list-style-type: none"> <li>– Fill orders in IROC</li> <li>– Pass to ICP</li> </ul>	

STUDENT NAME: \_\_\_\_\_ TOTAL: \_\_\_\_\_

## SIMULATION 1 – CREW

### INPUT 1

TO: Crew DESK

DATE: Tuesday

TIME: +12

FROM: EDSP

POSITION: EDSP

LOCATION: GPC

---

MESSAGE VIA: Verbal

The initial attack desk is very busy and asked that we fill some of the pending crew requests:

Fill with master rosters:

- WKD Hotliners
- Kyle #1
- Ridge Runners
- Eagle Butte #1
- Eagle Butte #2

When making the travel for the crews give each crew 2 hours from now. Don't forget to let ICP know; IA won't have time.

Also, find out how many crew orders are open or pending.

## SIMULATION 1 – CREW

### INPUT 2

TO: Crew DESK

DATE: Tuesday

TIME: +24

FROM: Carlos

POSITION: ORDM

LOCATION: ICP

---

MESSAGE VIA: Phone

I need to order

- five (5) Type 2 IA crews
- five (5) Type 1 crews.

Need them tomorrow at 0600; deliver to ICP.

## SIMULATION 1 – CREW

### INPUT 3

TO: Crew DESK

DATE: Tuesday

TIME: +36

FROM: Dave

POSITION: CREP, Eagle Butte #2

LOCATION: Sturgis, SD

---

MESSAGE VIA: Phone

Our bus has broken down in Sturgis, SD. We're here at the Fix-It Shop on the corner of Harley and Seager.

They say it should be up and running in 1 hour, so our new ETA will be 1 hour later to ICP.

## SIMULATION 1 – CREW

### INPUT 4

TO: Crew DESK

DATE: Tuesday

TIME: +48

FROM: Laura

POSITION: Crew Desk

LOCATION: RMC

---

MESSAGE VIA: Phone/Email

I emailed you the manifests and flight plan for the five (5) Type 1 crews (CRW1) from the Northwest. Fill information is in IROC.

**\*Hand out the additional references on page 8.**

# ADDITIONAL REFERENCE

<h2 style="margin: 0;">Aircraft Flight Schedule</h2> <p style="margin: 0; font-size: 0.8em;">TO BE COMPLETED BY FLIGHT MANAGER/PILOT PRIOR TO DEPARTURE / SEE PAGE 2-3 FOR INSTRUCTIONS</p>									
<b>Aircraft and Pilot Information</b>									
FAA# & Call Sign	708AW	Make/Model	B-737	Color	Blue and Yellow				
Pilot(s)	Anne T. Lope	Pilot(s) Phone #	307-555-1234	Aircraft Vendor	Sierra Atlantic				
<b>Flight Type</b>		<b>Flight Following Method</b>		<b>Passenger Information</b>					
Point to Point	<input type="checkbox"/>	Flight Following with the FAA	<input checked="" type="checkbox"/>	Chief of Party (COP)	J. PLATT		COP phone #	801-555-6666	
Mission Flight	<input type="checkbox"/>	Agency Flight Following	<input type="checkbox"/>	# of Passengers – Pilot +	Pilot(s) + 15 Pax		Charge Code	P2ABC1	
Fixed Wing	<input type="checkbox"/>								
Helicopter	<input type="checkbox"/>								
<b>Passenger Manifest</b>									
Passenger Name	DPT	DST	Passenger Name	DPT	DST	Passenger Name	DPT	DST	
Winema IHC	RDM	RAP							
Zig Zag IHC	RDM	RAP							
Prineville IHC	RDM	RAP							
Warm Springs IHC	RDM	RAP							
Redmond IHC	RDM	RAP							
<b>Flight Itinerary</b>									
<b>Departure</b>				<b>ETE</b>	<b>Arrival</b>		<b>Drop Off</b>		
Flight Date	# PAX	Airport	ETD		Airport	ETA	# PAX		
9/3/25	0	BOI	0215 M	+45	RDM	0200 p	P/U IHC at Air Center		
	100	RDM	0245p	2+15	RAP	0600M	D/O at Tanker Base		
	0	RAP	0700M	1	BOI	0800M			
<b>Mission Details/Notes</b>									
Transport 5 IHC from BOI to RAP Flynn Creek Mobilization									
National Flight Follow Frequency			Rx/Tx 168.650 Rx/Tx tone 110.9		Local Flight Follow Frequency				
Air Guard			Rx/Tx 168.625 Tx Tone 110.9						



## **SIMULATION 1 – CREW**

### **INPUT 5**

TO: Crew DESK

DATE: Tuesday

TIME: +60

FROM: Jill

POSITION: Crew Desk

LOCATION: RMC

---

MESSAGE VIA: Phone

Due to a family emergency Walter Simmons from the Pine Ridge #8 crew, needs to call home immediately.

## **SIMULATION 1 – CREW**

### **INPUT 6**

TO: Crew DESK

DATE: Tuesday

TIME: +72

FROM: Laura

POSITION: Crew Desk

LOCATION: RMC

---

MESSAGE VIA: Phone

Sierra Atlantic is having difficulties rounding up a flight crew. As a result of this, the jet N708AW, carrying the five (5) Type 1 crews from the Northwest will be arriving 2 hours later.

## **SIMULATION 1 – CREW**

### **INPUT 7 (1 of 2)**

TO: Crew DESK

DATE: Tuesday

TIME: +84

FROM: EDSP

POSITION: EDSP

LOCATION: GPC

---

MESSAGE VIA: Verbal

How many resource orders are missing travel in IROC?

## **SIMULATION 1 – CREW**

### **INPUT 7 (2 of 2)**

TO: Crew DESK

DATE: Tuesday

TIME: +84

FROM: Carlos

POSITION: ORDM

LOCATION: ICP

---

MESSAGE VIA: Phone

What is the status of the two (2) Type 2 IA crews that were placed up to the GACC?

## **SIMULATION 1 – CREW**

### **INPUT 8**

TO: Crew DESK

DATE: Tuesday

TIME: +96

FROM: Carlos

POSITION: ORDM

LOCATION: ICP

---

MESSAGE VIA: Phone

Emergency message was passed, and ICP will arrange a vehicle to transport Walter Simmons home from Pine Ridge #8 crew.

ETD Today 18:00 ETE 2+30

## SIMULATION 1 – CREW

### INPUT 9

TO: Crew DESK

DATE: Tuesday

TIME: +108

FROM: Carlos

POSITION: ORDM

LOCATION: ICP

---

MESSAGE VIA: Phone

Pine Ridge #9, Crew Boss is sending two individuals home to return to college.  
Their names are Ericka Davis and Craig Elliot.

They will travel with the same driver taking Walter Simmons home today at 18:00.

## **SIMULATION 1 – CREW**

### **INPUT 10**

TO: Crew DESK

DATE: Tuesday

TIME: +120

FROM: Carlos

POSITION: ORDM

LOCATION: ICP

---

MESSAGE VIA: Phone

I need two (2) camp crews, delivered to ICP tomorrow at 14:00.

## SIMULATION 1 – EQUIPMENT

### INPUT 1 (1 of 2)

TO: Equipment DESK

DATE: Tuesday

TIME: +12

FROM: Carlos

POSITION: ORDM

LOCATION: ICP

---

MESSAGE VIA: Phone

I need you to order a Type 1 lowboy. Needed today at 2000 delivered to ICP.



## SIMULATION 1 – EQUIPMENT

### INPUT 1 (2 of 2)

TO: Equipment DESK

DATE: Tuesday

TIME: +12

FROM: EDSP

POSITION: EDSP

LOCATION: GPC

---

MESSAGE VIA: Verbal

How many orders are pending in IROC?

## SIMULATION 1 – EQUIPMENT

### INPUT 2

TO: Equipment DESK

DATE: Tuesday

TIME: +24

FROM: Carlos

POSITION: ORDM

LOCATION: ICP

---

MESSAGE VIA: Phone

We need to order:

- one (1) Type 1 pickup with driver, and
- one (1) Type 3 engine.

We want them delivered to the ICP tomorrow at 0600.

## SIMULATION 1 – EQUIPMENT

### INPUT 3

TO: Equipment DESK

DATE: Tuesday

TIME: +36

FROM: Yvonne

POSITION: Admin Unit

LOCATION: S.O.

---

MESSAGE VIA: Phone (Hand this to student as the email)

I've emailed you fill information for you on the lowboy and pickup.

- LOWBOY – On Track Equipment, Agreement Number – 1234, SD-BKF is the provider, and On Track Equipment is the Vendor. It should depart Rapid City at 1800 and make it to ICP by 2000 tonight.”
- Transportation, Pickup - 4 – England & Sons, Agreement Number – 1236, SD- BKF as the provider and England & Sons is the vendor. It's leaving tomorrow morning at 0400, 2 hours en route. Driver is Queena England.”

## SIMULATION 1 – EQUIPMENT

### INPUT 4

TO: Equipment DESK

DATE: Tuesday

TIME: +48

FROM: Carlos

POSITION: ORDM

LOCATION: ICP

---

MESSAGE VIA: Phone

We need to order five (5) Type 3 engines.

They need to be at ICP tomorrow at 0600.

# Interagency Dispatch Center

## Engine Type 3

Published On: 05/19/2023 17:05 MDT

Dispatch Priority Ranking	Agreement Number	Company Name	Contact	Phone Numbers	Fax Number	Equipment Location - City / Municipality	Equipment Location - State / Province	VIN	CLIN	AWD	CAFS
1	1202STT7493	Fire R US  DBA:	Darren  Vendor Email:	Daytime: 605-453-0099	None	Rapid City	South Dakota	1HT777AN6WH530240	0001	Yes	No
2	1202SBZZT7176	Happy Fire  DBA:	Martin  Vendor Email:	Cell/Alternate: 605-987-5242	None	Custer	South Dakota	2FZA777716AX16022	0002	No	Yes
3	12020002T7305	Rock N Fire  DBA:	Wendy  Vendor Email:	Daytime: 605-473-9274	None	Rapid City	South Dakota	3HATTTR4GL225758	0014	Yes	Yes
4	1202SB22T7299	KA Fire  DBA:	Crystal  Vendor Email:	Daytime: 605-987-3412	None	Wall	South Dakota	1FD000000KED70393	0003	Yes	Yes
5	1202SB2ZZZ564	Tree Town, Inc.  DBA:	Birch  Vendor Email:	Cell/Alternate: 605-399-0234	None	Pine Ridge	South Dakota	1HTBN2TH335493	0004	No	No
6	1202SB22T7564	Tree Town, Inc.  DBA:	Birch  Vendor Email:	Cell/Alternate: 605-399-0234	None	Pine Ridge	South Dakota	1HTSE2VH454711	0006	Yes	No

## SIMULATION 1 – EQUIPMENT

### INPUT 5

TO: Equipment DESK

DATE: Tuesday

TIME: +60

FROM: EDSP

POSITION: EDSP

LOCATION: GPC

---

MESSAGE VIA: Verbal

Can you check on the status of vehicles to transport tools and the five (5) Type 1 Crews that will arrive tomorrow at 0600 from RAP to ICP?

## SIMULATION 1 – EQUIPMENT

### INPUT 6

TO: Equipment DESK

DATE: Tuesday

TIME: +72

FROM: Carlos

POSITION: ORDM

LOCATION: ICP

---

MESSAGE VIA: Phone

I need to order one support tender with a spray bar for dust abatement at the helibase.

Date and time needed is tomorrow at 0800 – have them report to ICP and we'll get them directions to the helibase.

Also, we should have a STEN on order for the five (5) Type 3 engines. Can you confirm that for me? We need one by 0600 tomorrow.

Interagency Dispatch Center

Water Tender (Support) Type 1

Published On: 05/19/2023 17:09 MDT

Dispatch Priority Ranking	Agreement Number	Company Name	Contact	Phone Numbers	Fax Number	Equipment Location - City / Municipality	Equipment Location - State / Province	VIN	CLIN	AWD
1	1202SB2277777	KA Fire LLC DBA:	Ryan Vendor Email:	Cell/Alternate: 605-234-8765	None	SWEET	South Dakota	1XKDDR9YYY49290	0001	No



## SIMULATION 1 – EQUIPMENT

### INPUT 7

TO: Equipment DESK

DATE: Tuesday

TIME: +84

FROM: EDSP

POSITION: EDSP

LOCATION: GPC

---

MESSAGE VIA: Verbal

How many resources have a roster in IROC?

## SIMULATION 1 – EQUIPMENT

### INPUT 8

TO: Equipment DESK

DATE: Tuesday

TIME: +96

FROM: Carlos

POSITION: ORDM

LOCATION: ICP

---

MESSAGE VIA: Phone

What is the ETA for the five (5) Type 3 engines?

## SIMULATION 1 – EQUIPMENT

### INPUT 9

TO: Equipment DESK

DATE: Tuesday

TIME: +108

FROM: KA Fire LLC

POSITION: Contractor

LOCATION: Home

---

MESSAGE VIA: Phone

I found a driver for my water tender and can fill the request. They've got an hour of drive time to make it to ICP by 0800 tomorrow. Buck Star is the driver.

## SIMULATION 1 – EQUIPMENT

### INPUT 10 (1 of 2)

TO: Equipment DESK

DATE: Tuesday

TIME: +120

FROM: Carlos

POSITION: ORDM

LOCATION: ICP

---

MESSAGE VIA: Phone

We need to order a caterer, needed tomorrow @ 1800. First meal is dinner for 250, then 300. The FACL, Ryan Steele will be the contact, and we don't anticipate there will be a spike camp.

## SIMULATION 1 – EQUIPMENT

### INPUT 10 (2 of 2)

TO: Equipment DESK

DATE: Tuesday

TIME: +120

FROM: Cole

POSITION: Equipment Desk

LOCATION: RMC

---

MESSAGE VIA: Phone

Fill and travel is in IROC for two (2) Type 3 engines.

## SIMULATION 1 – OVERHEAD

### INPUT 1 (1 of 2)

TO: Overhead Desk

DATE: Tuesday

TIME: +12

FROM: Julie

POSITION: Overhead Desk

LOCATION: RMC

---

MESSAGE VIA: Phone/Email

I emailed you a flight plan with travel for PIO3 (R. Joblonski), LSC3 (J. Walton), DIVS (M. Ward), and the SITL (P. Burne) on the Type 3 team.

**\*Hand out the additional reference on page 2.**

# Aircraft Flight Schedule

TO BE COMPLETED BY FLIGHT MANAGER/PILOT PRIOR TO DEPARTURE / SEE PAGE 2-3 FOR INSTRUCTIONS

## Aircraft and Pilot Information

FAA# & Call Sign	N559K	Make/Model	Cessna 340	Color	Mauve/White
Pilot(s)	W.Greeley	Pilot(s) Phone #	970-123-9874	Aircraft Vendor	Starry Aviation

Flight Type		Flight Following Method		Passenger Information		
Point to Point	<input type="checkbox"/>	Flight Following with the FAA	<input checked="" type="checkbox"/>	Chief of Party (COP)	S. Stucki	COP phone # 801-555-6666
Mission Flight	<input type="checkbox"/>					
Fixed Wing	<input type="checkbox"/>	Agency Flight Following	<input type="checkbox"/>	# of Passengers – Pilot +	Pilot(s) + 4 Pax	Charge Code P2ABC1
Helicopter	<input type="checkbox"/>					

## Passenger Manifest

Passenger Name	DPT	DST	Passenger Name	DPT	DST	Passenger Name	DPT	DST
Rob Jablonski	GJT	GJT						
Jack Walton	GJT	GJT						
Mike Ward	GJT	GJT						
Pete Burne	GJT	GJT						

## Flight Itinerary

Departure				ETE	Arrival		Drop Off
Flight Date	# PAX	Airport	ETD		Airport	ETA	# PAX
9/2/25	4	GJT	1230M	1+45	CUT	1415M	D/O 4 PAX
		CUT	1430M	1+45	GJT	1615M	

## Mission Details/Notes

Transport IMT members Flynn Creek Mobilization

National Flight Follow Frequency	Rx/Tx 168.650 Rx/Tx tone 110.9	Local Flight Follow Frequency	
Air Guard	Rx/Tx 168.625 Tx Tone 110.9		

## **SIMULATION 1 – OVERHEAD**

### **INPUT 1 (2 of 2)**

TO: Overhead Desk

DATE: Tuesday

TIME: +12

FROM: Becky

POSITION: Overhead Desk

LOCATION: RMC

---

MESSAGE VIA: Phone

There's fill and travel information in IROC for the LSC3-T (R. Kingston), SPUL (W. Yellowtail), COML (S. Simon), and TIME (B. Rugby) – they are all going commercial. There's also fill and travel for the FBAN (S. Bow) and FACL (R. Steele) – they are driving.



## **SIMULATION 1 – OVERHEAD**

### **INPUT 2**

TO: Overhead Desk

DATE: Tuesday

TIME: +24

FROM: EDSP

POSITION: EDSP

LOCATION: GPC

---

MESSAGE VIA: Verbal

How many overhead orders are pending?

## SIMULATION 1 – OVERHEAD

### INPUT 3

TO: Overhead Desk

DATE: Tuesday

TIME: +36

FROM: EDSP

POSITION: EDSP

LOCATION: GPC

---

MESSAGE VIA: Verbal

We need to order 2 EDRCs and 1 EDSP on the **BKF Large Fire Support** order. These are for expanded night shift tonight. I'd like the EDRCs here by 2000 and the EDSP by midnight. Should be able to fill them locally, but if you can't place the requests up.

## **SIMULATION 1 – OVERHEAD**

### **INPUT 4**

TO: Overhead Desk

DATE: Tuesday

TIME: +48

FROM: Carlos

POSITION: ORDM

LOCATION: ICP

---

MESSAGE VIA: Phone

I need you to order 3 DIVS and 1 HEQB on Flynn Creek.

## **SIMULATION 1 – OVERHEAD**

### **INPUT 5**

TO: Overhead Desk

DATE: Tuesday

TIME: +60

FROM: Carlos

POSITION: ORDM

LOCATION: ICP

---

MESSAGE VIA: Verbal

I need you to order an IMET for delivery 0600 tomorrow to ICP.

## **SIMULATION 1 – OVERHEAD**

### **INPUT 6**

TO: Overhead Desk

DATE: Tuesday

TIME: +72

FROM: Carlos

POSITION: ORDM

LOCATION: ICP

---

MESSAGE VIA: Phone

I ordered a bunch of engines and will need a STEN to go with them. Gotta go!

## **SIMULATION 1 – OVERHEAD**

### **INPUT 7 (1 of 2)**

TO: Overhead Desk

DATE: Tuesday

TIME: +84

FROM: EDSP

POSITION: EDSP

LOCATION: GPC

---

MESSAGE VIA: Verbal

How many resources on Flynn Creek need travel completed in IROC?

## **SIMULATION 1 – OVERHEAD**

### **INPUT 7 (2 of 2)**

TO: Overhead Desk

DATE: Tuesday

TIME: +84

FROM: Jane Maxwell

POSITION: EDSP (SD-BKF)

LOCATION: Home

---

MESSAGE VIA: Phone

Hi there. I'm going to be filling the EDSP on BKF Large Fire Support. I'm leaving at 20:30 from Deadwood, and I should be there by 22:30. I've got a POV - SD lic# Fyrefly.

## **SIMULATION 1 – OVERHEAD**

### **INPUT 8 (1 of 2)**

TO: Overhead Desk

DATE: Tuesday

TIME: +96

FROM: Julie

POSITION: Overhead Desk

LOCATION: RMC

---

MESSAGE VIA: Phone

There's fill in IROC for DIVS.



## SIMULATION 1 – OVERHEAD

### INPUT 8 (2 of 2)

TO: Overhead Desk

DATE: Tuesday

TIME: +96

FROM: EDSP

POSITION: EDSP

LOCATION: GPC

---

MESSAGE VIA: Verbal

I need you to order some more overhead on **BKF Large Fire Support**. I need 4 EDSDs and another EDSP – deliver here tomorrow at noon. Check for local resources, if none are available, place up.

## **SIMULATION 1 – OVERHEAD**

### **INPUT 9**

TO: Overhead Desk

DATE: Tuesday

TIME: +108

FROM: Carlos

POSITION: ORDM

LOCATION: ICP

---

MESSAGE VIA: Phone

What's the status of the IMET and STEN?

## **SIMULATION 1 – OVERHEAD**

### **INPUT 10**

TO: Overhead Desk

DATE: Tuesday

TIME: +120

FROM: Carlos

POSITION: ORDM

LOCATION: ICP

---

MESSAGE VIA: Phone

I've got a name request here for Jerry Stickley, an INVF – he's needed for the continuity of the investigation. I need him here tomorrow at 19:00.

## SIMULATION 1 – SUPPLY

### INPUT 1

TO: Supply DESK

DATE: Tuesday

TIME: +12

FROM: Bill

POSITION: ORDM

LOCATION: ICP

---

MESSAGE VIA: Phone

Hey there, I need the following:

20 ea. cubitainers needed at ICP 0900 Wednesday

10 ea. 5 Gallon cans of unleaded gas needed at ICP 0600 Wednesday

1 RAWS NFES 005869 Needed at ICP 0600 Wednesday

## **SIMULATION 1 – SUPPLY**

### **INPUT 2**

TO: Supply DESK

DATE: Tuesday

TIME: +24

FROM: Bill

POSITION: ORDM

LOCATION: ICP

---

MESSAGE VIA: Phone

I need to request one Cache Van. Need them at ICP 2000 tonight. And it will need stairs.

## SIMULATION 1 – SUPPLY

### INPUT 3

TO: Supply DESK

DATE: Tuesday

TIME: +36

FROM: EDSP

POSITION: EDSP

LOCATION: Expanded

---

MESSAGE VIA: Verbal

Can you please order 2 motel rooms for the night shift EDRCs coming in tonight – let's have the room's available today by 1800. They are on the BKF Large Fire Support order. Book them for two weeks.

## SIMULATION 1 – SUPPLY

### INPUT 4

TO: Supply DESK

DATE: Tuesday

TIME: +48

FROM: Bill

POSITION: ORDM

LOCATION: ICP

---

MESSAGE VIA: Phone

I need to request 500 breakfasts and 500 sack lunches. Need them at 0600 tomorrow at ICP.

**SIMULATION 1 – SUPPLY**  
**INPUT 5**

TO: Supply DESK

DATE: Tuesday

TIME: +60

FROM: Bill

POSITION: ORDM

LOCATION: ICP

---

MESSAGE VIA: Phone/Email

I emailed you a general message form for some supplies. Did you get it?   **\*Hand out the additional reference on page 6.**





## SIMULATION 1 – SUPPLY

### INPUT 6

TO: Supply DESK

DATE: Tuesday

TIME: +72

FROM: Eric

POSITION: Supply Desk

LOCATION: Cache

---

MESSAGE VIA: Email

See attached flight plan.

See attached Shipping Status Form.

**\*Hand out the additional references on pages 8 and 9.**

## ADDITIONAL REFERENCE

<b>Aircraft Flight Schedule</b> <small>TO BE COMPLETED BY FLIGHT MANAGER/PILOT PRIOR TO DEPARTURE / SEE PAGE 2-3 FOR INSTRUCTIONS</small>									
<b>Aircraft and Pilot Information</b>									
FAA# & Call Sign	N340G	Make/Model	Cessna 340	Color	Blue and White				
Pilot(s)	A. Wordy	Pilot(s) Phone #	970-123-8520	Aircraft Vendor	Cloud Aviation				
<b>Flight Type</b>			<b>Flight Following Method</b>			<b>Passenger Information</b>			
Point to Point	<input type="checkbox"/>	Flight Following with the FAA	<input checked="" type="checkbox"/>	Chief of Party (COP)	J. Jones	COP phone #	801-555-6666		
Mission Flight	<input type="checkbox"/>	Agency Flight Following	<input type="checkbox"/>	# of Passengers – Pilot +	Only Pilot(s) On Board	Charge Code	P2ABC1		
Fixed Wing	<input checked="" type="checkbox"/>								
Helicopter	<input type="checkbox"/>								
<b>Passenger Manifest</b>									
Passenger Name	DPT	DST	Passenger Name	DPT	DST	Passenger Name	DPT	DST	
<b>Flight Itinerary</b>									
Departure				ETE	Arrival		Drop Off		
Flight Date	# PAX	Airport	ETD		Airport	ETA	# PAX		
9/9/25	0	BOI	1500M	2+30	CUT	1730M	D/O NFES 005889 4 boxes		
		CUT	1430M	1+45	GJT	1615M			
<b>Mission Details/Notes</b>									
Transport Supply 4 boxes- 16 CU FT- 166lbs Flynn Creek Mobilization									
National Flight Follow Frequency		Rx/Tx 168.650 Rx/Tx tone 110.9			Local Flight Follow Frequency				
Air Guard		Rx/Tx 168.625 Tx Tone 110.9							

INTERAGENCY SUPPORT CACHE

\*\*\*SHIPPING STATUS\*\*\*

Date: Tuesday Attention To: Supply Desk From: Cache

Incident Order Number: \_\_\_\_\_ Incident/Project Name: Flynn Creek

S (or) E Numbers: Supplies

Issue Number: 9100022 Date & Time Shipped: Tuesday 12:00 MDT

Shipping Mode: Ground Est. Delivery Date/Time: Tuesday 19:00 MDT

Airbill#: \_\_\_\_\_ BOL#: \_\_\_\_\_ Pro#: \_\_\_\_\_

Items Shipped on Order: 20 ea. cubitainers

Items Cancelled/Not Carried: \_\_\_\_\_

Routing Information: via Ryder Van WY Lic #27361

Remarks: \_\_\_\_\_

Order Complete: ☒ Yes ☐ No

Emailed To: GPC Date/Time Tuesday 14:45 MDT

Emailed To: \_\_\_\_\_ Date/Time \_\_\_\_\_ / \_\_\_\_\_ / \_\_\_\_\_ :

**Additional Reference / Sim 1 / Supply / Input 6**

## SIMULATION 1 – SUPPLY

### INPUT 7

TO: Supply DESK

DATE: Tuesday

TIME: +84

FROM: Yvonne

POSITION: Fire Business

LOCATION: S.O.

---

MESSAGE VIA: Phone

Fill information for the meals - 500 breakfasts will be filled at Denny's, 500 lunches will be filled at Hungry Horse all on my credit card.

Our driver, Amanda, will be delivering in a pickup truck, SD License 4173LM.

## SIMULATION 1 – SUPPLY

### INPUT 8

TO: Supply DESK

DATE: Tuesday

TIME: +96

FROM: Bill

POSITION: ORDM

LOCATION: ICP

---

MESSAGE VIA: Email

I emailed you a General Message with more requests. Let me know if you have any questions...

**\*Hand out the additional reference on page 12.**

GENERAL MESSAGE		
TO:		POSITION: Supplies
FROM: Bill		POSITION: ORDM Flynn Creek
SUBJECT: Supply orders	DATE: Today	TIME:
MESSAGE:		
<p>Here are some more orders, if you have any questions, give me a call.</p> <p>1 kt Logistics repeater  4 kt crash rescue  3 ea. collapsible tanks, 1000 gal capacity  4 kt Mark 3 pump kits  50 gal regular gas  20 each porta potties</p> <p>Date/time needed is today at 1500</p>		
SIGNATURE:		POSITION:
REPLY:		
DATE:	TIME:	SIGNATURE/POSITION:

**Additional Reference / Sim 1 / Supply / Input 8**

## **SIMULATION 1 – SUPPLY**

### **INPUT 9**

TO: Supply DESK

DATE: Tuesday

TIME: +108

FROM: Bill

POSITION: ORDM

LOCATION: ICP

---

MESSAGE VIA: Phone

I need 500 sack lunches and one Public Address system NFES 004410, delivered to camp by 0700 on Wednesday.



## **SIMULATION 1 – SUPPLY**

### **INPUT 10**

TO: Supply DESK

DATE: Tuesday

TIME: +120

FROM: Yvonne

POSITION: Fire Business

LOCATION: SO

---

MESSAGE VIA: Phone

Fill on local purchase items, 10 – five gallon containers, filled by Charlie's Oil & Fuel; vendor will deliver to ICP by 0600 tomorrow.